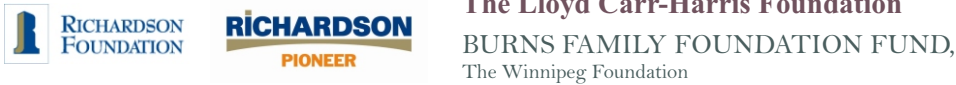


Prairie Debut is pleased to thank its generous funding partners.
 Their support enables our organization to enrich the lives of many.



Based in central Manitoba and incorporated in Alberta, Saskatchewan and Manitoba, Prairie Debut is a charitable status organization whose goal is to encourage community presenters to strive for artistic excellence in the presentation of professional classical and world music. The organization works to strengthen the interprovincial relationship of community presenters and contribute to the career development of Canadian professional classical and world artists by creating touring opportunities.

The Prairie Debut organization contributes to the career development of Canadian classical and world music artists and endeavours to enrich the cultural life of the communities with which it works. Since 1997, Prairie Debut has presented 85 artists in 35 tours to 62 communities in the Prairie provinces and Yukon. These tours have totaled over 425 concerts and reached more than 50,000 people. We have performed in:

- | | | | |
|--------------------|-----------------------|------------------|------------------|
| Assiniboia SK | Portage la Prairie MB | Melville SK | Rosthern SK |
| Banff AB | Golden BC | Minnedosa MB | Steinbach MB |
| Barrhead AB | Carman MB | Moosomin SK | Stettler AB |
| Biggar SK | Grand Prairie AB | Brooks AB | Strathclair MB |
| Brandon MB | Haines Junction Yk | Outlook SK | Swift Current SK |
| Lacombe AB | Spruce Grove AB | Prince Albert SK | The Pas MB |
| Canora SK | Hudson Bay SK | Quill Plains SK | Killarney MB |
| Edson AB | Fort McMurray AB | Snow Lake MB | Unity SK |
| Okotoks AB | Kindersley SK | Red Deer AB | Saskatoon SK |
| Thompson MB | Cold Lake AB | Weyburn SK | Lloydminster AB |
| Ft Saskatchewan AB | Kipling SK | Redvers SK | Virden MB |
| Pinawa MB | La Ronge SK | Regina SK | Winnipeg MB |
| Estevan SK | Leader SK | Ravenscrag SK | Watrous SK |
| Sherwood Park AB | Luseland SK | Shaunavon SK | Westlock AB |
| Flin Flon MB | Melfort SK | Morden MB | Weyburn SK |

Prairie Debut Inc. is an organization incorporated and based in MB with adjacent incorporation in Saskatchewan and Alberta.
 (Charitable No. 86799 3495 rr0001)

For more information, please visit: www.prairiedebut.com
 Lynne Bailey, Executive Director, Prairie Debut



Sharon Wei



Angela Park

Viola and Piano

2011.12 Tour Dates

Brandon MB

Friday, November 11/11 at 7:00PM
 Presented by Brandon University ProSeries
 Lorne Watson Recital Hall

Snow Lake MB

Monday, November 14/11 at 7:00PM
 Presented by Ravna House Concerts
 Ravna House

The Pas MB

Wednesday, November 16/11 at 7:00PM
 Presented by The Pas Arts Council
 Our Lady of the Sacred Heart Cathedral

Lacombe AB

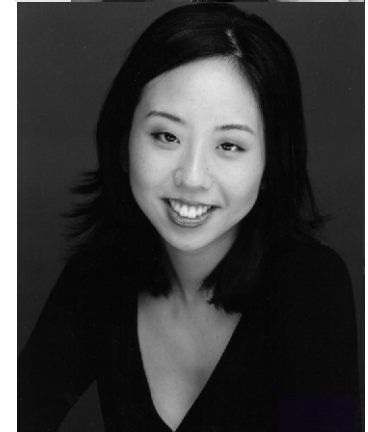
Sunday, November 20/11 at 7:00PM
 Presented by Canadian University College
 CUC Admin Building Auditorium

Estevan SK

Saturday, January 21/12 at 7:30PM
 Presented by Estevan Arts Council
 St. Paul's United Church

Regina SK

Sunday, January 22/12 (time tbc)
 Presented by Regina Musical Club
 Riddell Centre, University of Regina



ARTIST PROFILE

Violist Sharon Wei was a National Scholar and Canadian Merit Scholar at the University of Western Ontario. She completed her studies at the Curtis Institute of Music and at Yale University. She has appeared as soloist with many orchestras including Sinfonia Toronto, Scarborough Philharmonic, International Symphony of Sarnia and Port Huron and premiered a new concerto with the Curtis Symphony Orchestra. Recent seasons includes appearances with Stratford Civic Orchestra, Orchestra of Southern Utah, Connecticut Valley Chamber Orchestra, Kitchener Waterloo Chamber Orchestra, Palo Alto Chamber Orchestra and the Civic Orchestra of New Haven.

Sharon is the recipient of many awards and prizes. She has pursued her studies on grants from the Canada Council for the Arts and Chalmers Foundation. Other honours include awards from the Washington International Competition for Strings, Yale's Viola Prize, CBC Galaxie Prize. She was featured in *Chatelaine Magazine's* 80 women to watch in 2008 and is the recipient of a 2011 Alumni Award from the University of Western Ontario. As a recitalist Sharon has performed in the U.S., Canada, and Europe. She has appeared at the Arts and Letters Club of Toronto, New York Viola Society, International Viola Congress, Sacramento's Music Alive!, Oakmont Concerts in California, Performing Arts York Region and CBC Radio's Music Around Us Series.

An avid fan of chamber music, Sharon has performed at festivals such as the Ravinia Festival, Banff Centre for the Arts, Sarasota, Prussia Cove, Norfolk Chamber Music and June in Buffalo New Music Festival. She has performed on tours of France with celebrated musicians Joseph Silverstein, Jean-Jacques Kantarow and Claude Frank. At the Verbier Festival in Switzerland, Sharon appeared with James Levine and Lynn Harrell. She has performed with artists including Gary Hoffman, Laurence Lesser, Lorand Fenyves, Peter Frankl, and the St. Lawrence String Quartet. She is the co-founder of the award-winning Ensemble Made in Canada. Sharon has taught at Yale University and is currently a lecturer at Stanford University. www.sharonwei.net

Pianist Angela Park has established herself as one of Canada's leading young musicians. She has won numerous awards in major competitions both at home and abroad, including the International Grace Welsh Prize for Piano in Chicago, World Piano Competition in Cincinnati, Canadian National Music Festival, Honens International Piano Competition, and the Maria Canals International Piano Competition in Barcelona. As soloist and chamber musician, Angela has performed for such notable series as Montreal's Pro Musica, Ottawa Chamberfest, Parry Sound Festival of the Sound, Stratford Summer Music Festival, Winnipeg Virtuosi, Debut Atlantic and Prairie Debut Tours, CBC Onstage, Yamanashi Concerts in Japan, Orchestra London Canada, Sinfonia Toronto, Stratford Symphony, and the Northern Lights Music Festival in Mexico. She is a founding member of the award-winning Ensemble Made In Canada, the Mercer-Park Duo and the Wei-Park Duo.

ARTIST PROGRAM

Robert Schumann (1810-1856)

Märchenbilder for Viola and Piano, Op.113

I. Nicht schnell

II. Lebhaft

III. Rasch

IV. Langsam, mit melancholischen Ausdruck

Rebecca Clarke (1886-1979)

Sonata for Viola and Piano

I. Impetuoso; Poco Agitato

II. Vivace

III. Adagio; Allegro

INTERMISSION

Sid Robinovitch (b.1942)

Adieu Babylon

Johannes Brahms (1833-1897)

Sonata in F minor for Viola and Piano, Op. 120, No. 1

I. Allegro appassionato - Sostenuto ed espressivo

II. Andante un poco adagio

III. Allegretto grazioso

IV. Vivace

Angela has also appeared in concert with such renowned artists as flutists Susan Hoepfner and Tara Helen O'Connor, violinists Jonathan Crow and Scott St. John, horn virtuoso William VerMeulen, the Cecilia String Quartet, and conductor Yannick Nézet-Séguin. In 2010 Angela earned her DMA in Performance from the Université de Montréal and she is currently Visiting Assistant Professor in Collaborative Piano at the Jacobs School of Music at Indiana University. www.angelapark.com